

Realizing the potential of living longer



POPULATION



Vitalija Gaucaite Wittich

Population Dynamics, Human Capital and Sustainable Development in South-East Europe, 21-22 October 2019, Sarajevo



UNECE region

Member States

POPULATION

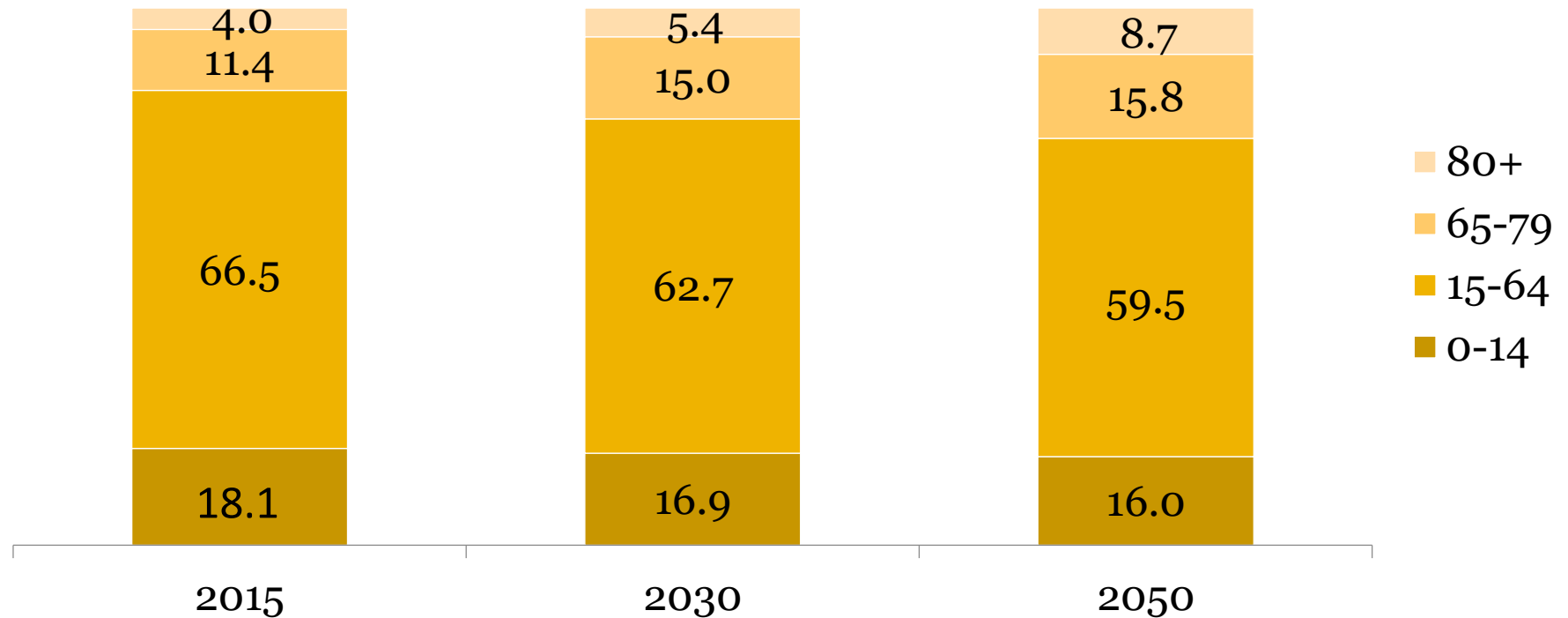


**56 member States,
17 % of world population, >30 % of world's 65+**

UNECE region

Population age composition (%)

POPULATION



Source: UNDESA World Population Prospects, rev. 2019

Policy response

2017 Lisbon Declaration

3 goals for the fourth cycle

POPULATION



2017

2018

2019

2020

2021

Goal 1 – Recognizing the potential of older persons

Goal 2 – Encouraging longer working life and ability to work

Goal 3 – Ageing with dignity



Lisbon, 20-22 September 2017

A SUSTAINABLE
SOCIETY FOR ALL AGES

Realizing the potential
of living longer

UNECE MINISTERIAL CONFERENCE ON AGEING 2017

Suggested Approaches

POPULATION



- Age-integrated approach to facilitate transitions between education, working, caring and leisure
- Possibility to flexibly combine these stages over the life course while mitigating personal risks and social inequalities



Suggested Approaches

POPULATION



Collaborative efforts of individuals, civil society, businesses and the state aiming at realizing the potential of:

- Healthy life years
- Extended working lives
- Silver economy
- Volunteering & caring



Active Ageing Index

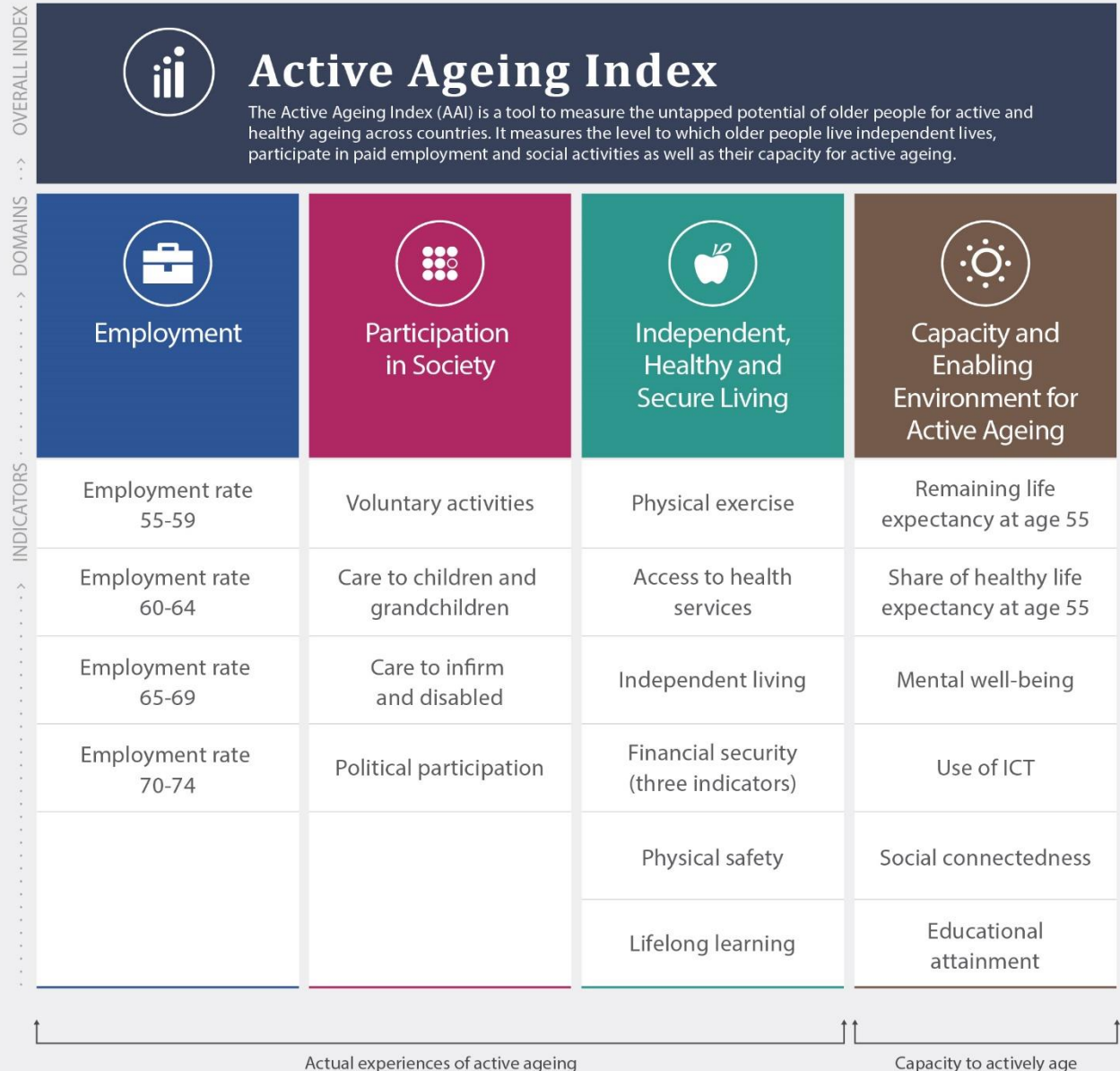
Capturing various facets of active ageing & indicating how much of the potential of older persons is realized



AAI

22 indicators

4 domains








Active Ageing Index, 2018

POPULATION



North Macedonia

Serbia

	Men	Women		Men	Women
 Overall	34.3	27.2		36.5	30.1
 Employment	30.8	14.5		36.6	21.3
 Participation in society	15.8	13.7		19.1	17.0
 Independent living	60.4	59.0		62.0	61.1
 Capacity for active ageing	59.7	57.3		53.9	52.7

Active Ageing Index, 2018

POPULATION



Capacity for active ageing

North Macedonia

Serbia

	Indicators	Men	Women		Men	Women
4.1	RLE at age 55 (as % of next 50 years)	43.8	50.0		43.2	51.0
4.2	Share of HLE in RLE	71.7	62.1		70.5	66.0
4.3	Mental well-being	81.9	81.1		50.6	45.7
4.4	Use of ICT	38.0	32.0		39.0	29.0
4.5	Social connectedness	n/a	n/a		n/a	n/a
4.6	Educational attainment	63.2	43.1		72.2	55.4



Thank you

<https://www.unece.org/population/ageing.html>